

# Technical Data Sheet

CODE 12455

## VORTICE 230/9" AR-LL-S

Wall/window axial fans



### Certifications



IMQ



CE



IMQ Performance



C Tick Mark

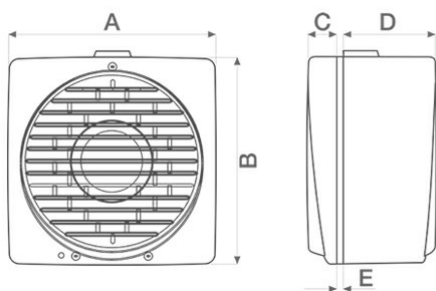


EAC

### TECHNICAL AND PERFORMANCE DATA

Absorbed Current max (A)	0,19	Voltage (V)	220-240
Absorbed Power max (W)	35	Weight (Kg)	3,45
Frequency (Hz)	50/60	Delivery max - Extract (l/s)	194,4
Inlet	Automatico	Delivery max - Extract (m3/h)	700
Insulation Class	II°	Delivery max - Intake (l/s)	102,8
IP	X4	Delivery max - Intake (m3/h)	370
Max absorbed Power at 60Hz (W)	40	Delivery max (m³/h)	700
Max ambient temperature for continuous operation (°C)	50	RPM	1200
Max ambient temperature for continuous operation 60Hz (°C)	50	Rpm - Exhaust	1200
Nominal Diameter (mm)	262	Rpm - Supply	1300
Ø Discharge Hole (mm)	230	Sound Pressure level Lp [dB (A)] 3m	43,6

### DIMENSIONS



Etichetta Energetica	NO
Ø glass hole	257/262
Ø wall hole	257/262
Size A (mm)	294
Size B (mm)	297
Size C (mm)	31
Size D (mm)	130
Size E (mm)	2/38

#### PER INFORMAZIONI:

Servizio al Cliente: tel +39 02 90699395 premendo 1 dopo messaggio registrato (consulenza su prodotti e impianti)

Pre & Post Vendita: fax +39 02 90699302

Email prevendita: prevendita@vortice-italy.com

# Technical Data Sheet

CODE 12455

## VORTICE 230/9" AR-LL-S

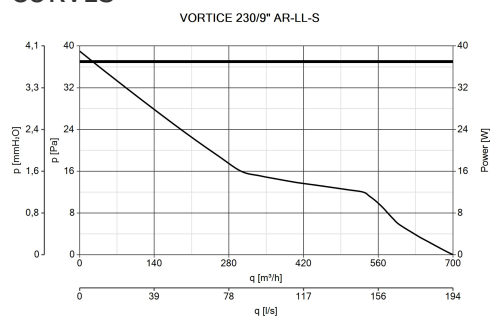
Wall/window axial fans



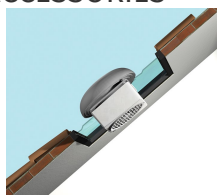
### DESCRIPTION

- Model designed for window/wall mounted installation.
- Material: UV resistant ABS plastic (prevents ageing caused by exposure to sunlight).
- Nominal diameter 230 mm.
- Motor protected against thermal overload, with shaft turning in ball bearings, coupled to screw type thermoplastic impeller with wing profile blades.
- Maximum extract air flow: 700 m<sup>3</sup>/h
- Maximum supply air flow 370 m<sup>3</sup>/h
- IMQ SAFETY and IMQ PERFORMANCE certifications
- Vortice speed controller.

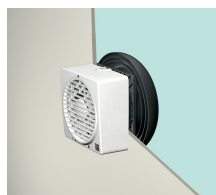
### CURVES



### ACCESSORIES



**KIT TE 230/9"**  
**(TORRETTA)**  
Code 13002



**KIT SA 230/9"**  
**(SCHERMO ANTILUCE)**  
Code 13004



**KIT MU (MURO)**  
Code 13018



**KIT VV 230/9"**  
**(DOPPI VETRI)**  
Code 13022

#### PER INFORMAZIONI:

Servizio al Cliente: tel +39 02 90699395 premendo 1 dopo messaggio registrato (consulenza su prodotti e impianti)  
Pre & Post Vendita: fax +39 02 90699302  
Email prevendita: [prevendita@vortice-italy.com](mailto:prevendita@vortice-italy.com)