

PA Sounders

Captive fastener

Installation and assembly is simplified and screws cannot get lost.

Shape-moulded gasket

Stays in-place and cannot get lost.

Plug and socket connections

Upper and lower parts combine positively to simplify installation. When separated, electrical hazards are eliminated for handling.

Selectable audible notification

Choice of 80 unique alarm tones with four stages of tone control for distinctive signalling of specific events.

Impact resistant housing

Achieves IK08 impact rating to endure harsh environments.

IP 66 enclosure rating

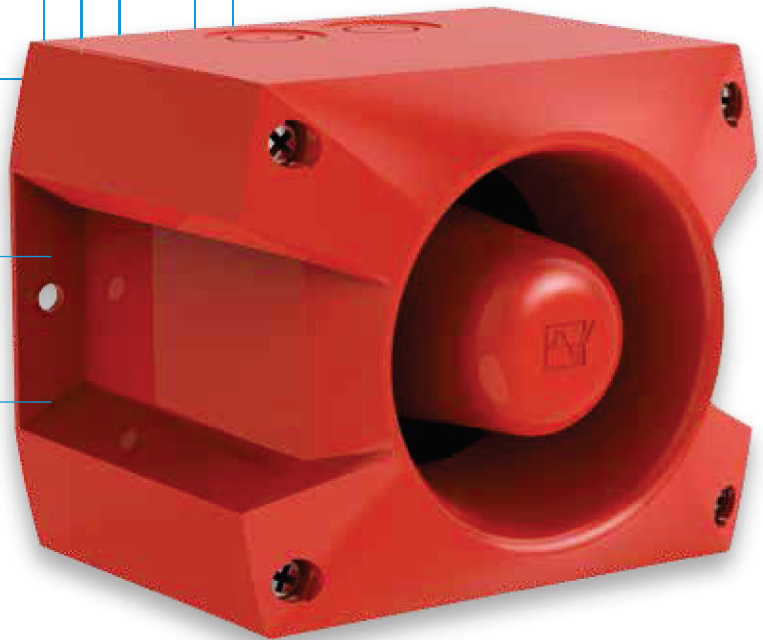
Suitable for use in all weather conditions due to the provided protection against driving rain, snow, ice, and dust. Withstands hose-directed spray during wash-down requirements.

Electromagnetic sound capsule technology

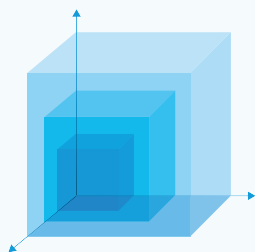
Acoustic signal includes a share of low frequency side bands for excellent sound penetration of walls and doors for highly effective alarming.

Intelligent installation

Electrical wiring is conducted in the base box to avoid clumsy 3-hand assembly. Wires are safely routed where the potential for pinching and errors are eliminated.



3D-Coverage performance data, A x B x C



Coverage area with DIN tone and required sound levels of 80, 85 and 90 dB(A). To determine the exact signaling area for your needs, please use the online available Pfannenberg Sizing Software PSS.

PA 1

80 dB(A)	16 x 13.8 x 16 m
85 dB(A)	9 x 7.8 x 9 m
90 dB(A)	5.1 x 4.4 x 5.1 m

PA 10

80 dB(A)	52.8 x 73.3 x 52.8 m
85 dB(A)	29.7 x 41.2 x 29.7 m
90 dB(A)	16.7 x 23.2 x 16.7 m

PA 5

80 dB(A)	14.1 x 18.1 x 14.1 m
85 dB(A)	7.9 x 10.2 x 7.9 m
90 dB(A)	4.4 x 5.7 x 4.4 m

PA 20

80 dB(A)	85.6 x 97.7 x 85.6 m
85 dB(A)	48.1 x 55 x 48.1 m
90 dB(A)	27.1 x 30.9 x 27.1 m

SOUNDERS



protection system



impact-proof housing



operating temperature



acoustic penetration



external tone selection



PA 1



PA 10



24–48 V DC



24–48 V DC



UL



warranty



PA 5



PA 20

PRODUCT	PA 1		PA 5	
ARTICLE NO. ●	23310100000	23310630000	23350100000	23350630000
ARTICLE NO. ●	23310100055	23310630055	23350100055	23350630055

DATA				
Operating range	195–253 V	10–57 V	195–253 V	10–57 V
	AC 50 60 Hz	DC	AC 50 60 Hz	DC
Nominal current consumption	9–15 mA @ 230 V	6–80 mA	9–15 mA @ 230 V	6–80 mA

PRODUCT	PA 10		PA 20	
ARTICLE NO. ●	23360640000	23360630000	23370640000	23370630000
ARTICLE NO. ●	23360640055	23360630055	23370640055	23370630055

DATA				
Operating range	95–265 V	10–60 V	95–265 V	10–60 V
	AC 50 60 Hz	DC	AC 50 60 Hz	DC
Nominal current consumption	20–115 mA @ 230 V	60–485 mA	75–330 mA @ 230 V	120–880 mA

	PA 1	PA 5	PA 10	PA 20
Sound pressure level	100 dB(A)	105 dB(A)	110 dB(A)	120 dB(A)
Sound level reduction	max. –16 dB via potentiometer		max. –12 dB via potentiometer	
Alarm tones	80 / 4 tones are externally selectable, tone table on page 106			
Operating temperature	–40 ... +55 °C			
Protection system according to EN 60529	IP 66			
Material	PC / ABS blend similar to RAL 3000 ● RAL 7035 ● RAL 9003 ●			
Dimensions (X x Y x Z)	109.5 x 86 x 80.6 mm	163.4 x 135 x 132 mm	214 x 170 x 156 mm	214 x 170 x 181 mm

For additional models, options and voltages visit www.pfannenberg.com or contact us directly.



Option



Option



Enclosure fitting



Surface gasket



Tamper-proof sealing



Panel mounting kit

Models with alternative features available upon request

PA 1 and PA 5 in 115 V AC.



Comprehensive technical documentation such as

- operating instructions, technical data, approvals
- support for planning, 3D models, CAD data

can be retrieved by entering this webcode in the search window on www.pfannenberg.com

